

**Iowa FFY 2006 (2006-2007) Eddyville-Blakesburg District Profile
Individuals with Disabilities Education Act (IDEA) Part B**

Outcome 1: Students with disabilities enter school ready to learn at high levels

Data on Early Childhood Outcomes are not reported for FFY 2006 because of insufficient n size.

Outcome 2: Students with disabilities participate in district wide assessments

Note: Missing data or “NA” in the tables and charts below indicate that the measure is not applicable for the district for the year indicated. “-” indicates that data were suppressed because grade level enrollment for students with IEPs was less than 5.

Indicator B3: Participation and performance of children with disabilities on statewide assessments.

Indicator B3B: Participation rate for children with IEPs in a regular assessment with no accommodations, regular assessment with accommodations, alternate assessment against grade level standards or alternate assessment against alternate achievement standards.

Indicator B3B: Reading Participation														
Grade	3		4		5		6		7		8		11	
Year	05-06	06-07	05-06	06-07	05-06	06-07	05-06	06-07	05-06	06-07	05-06	06-07	05-06	06-07
District %	-	-	100	100	100	100	100	100	100	100	100	100	100	100
State %	98.89	99.39	99.35	99.34	99.26	99.30	99.20	99.37	99.54	99.22	99.53	99.51	97.61	99.12

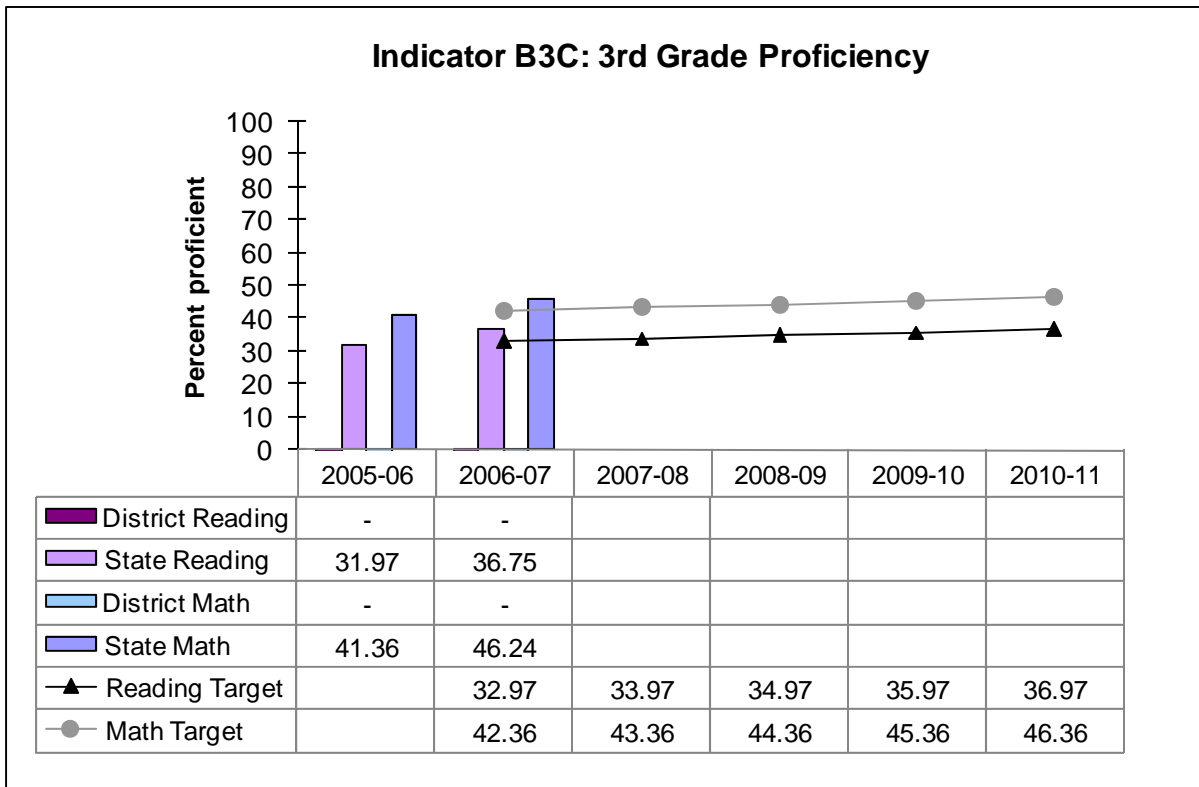
Data source: AYP Database.
2006-07 Target: 95.00%.
6-Year Target: 95.00%.

Indicator B3B: Math Participation														
Grade	3		4		5		6		7		8		11	
Year	05-06	06-07	05-06	06-07	05-06	06-07	05-06	06-07	05-06	06-07	05-06	06-07	05-06	06-07
District %	-	-	100	100	100	100	100	100	100	100	100	100	100	100
State %	98.85	99.30	99.22	99.18	99.04	99.20	99.10	99.21	99.42	99.06	99.29	99.08	97.53	99.00

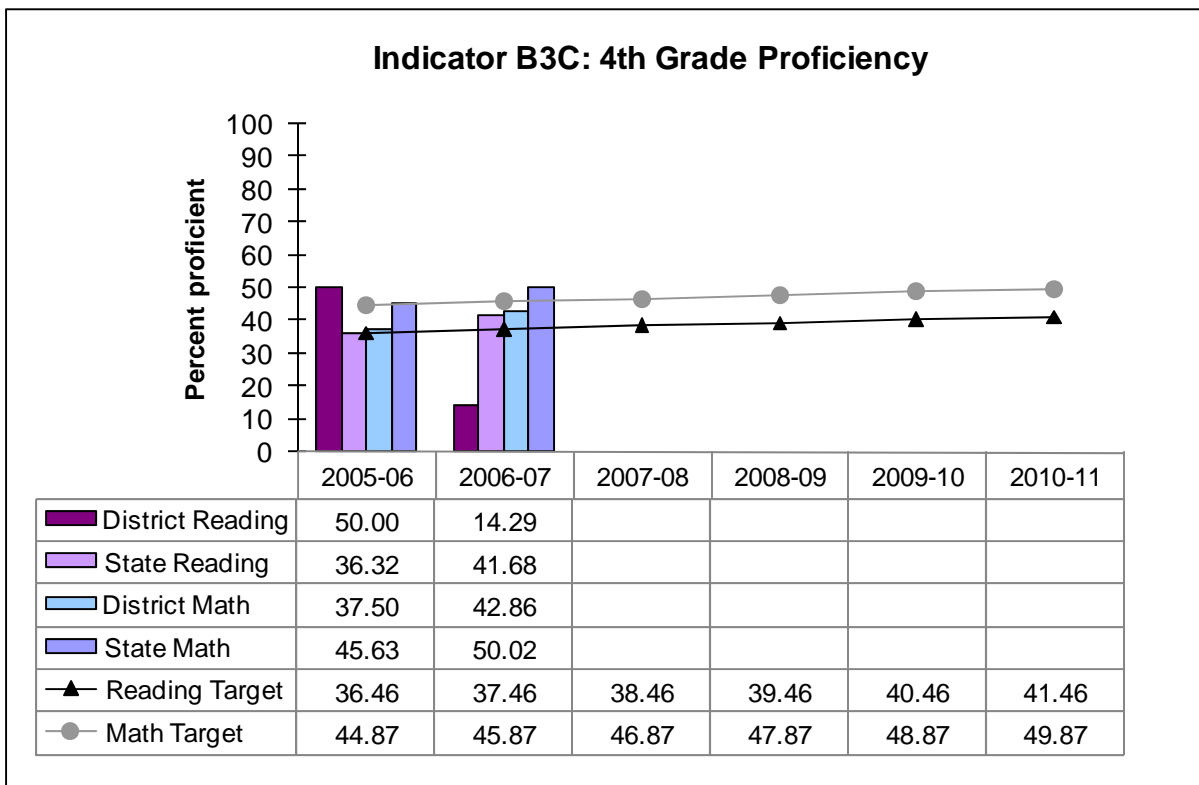
Data source: AYP Database.
2006-07 Target: 95.00%.
6-Year Target: 95.00%.

Outcome 3: Students with disabilities meet proficiency on district wide assessments

Indicator B3C: Proficiency rate for children with IEPs against grade level standards and alternate achievement standards.

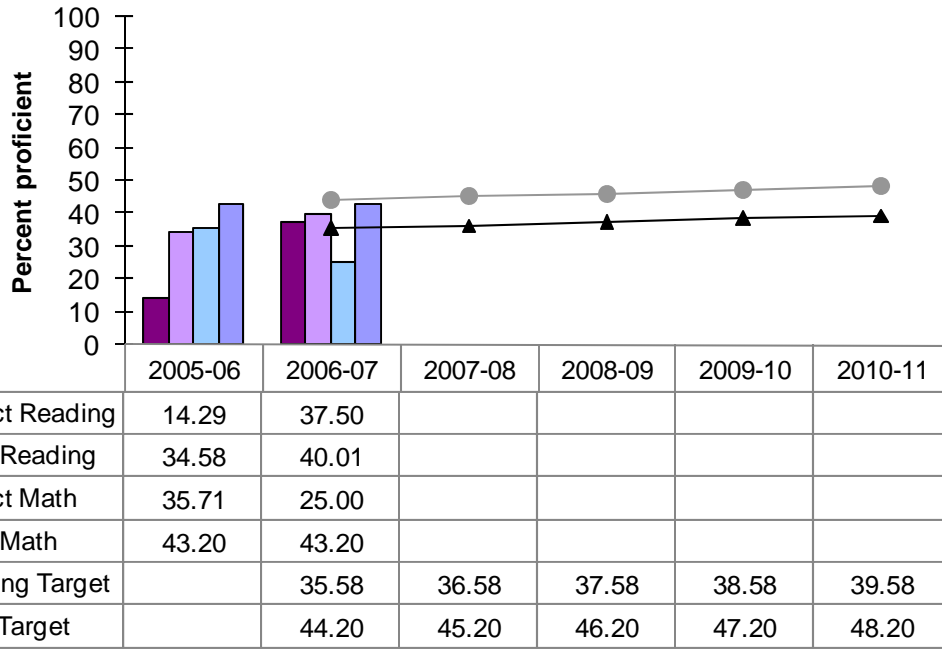


Data source: AYP Database.



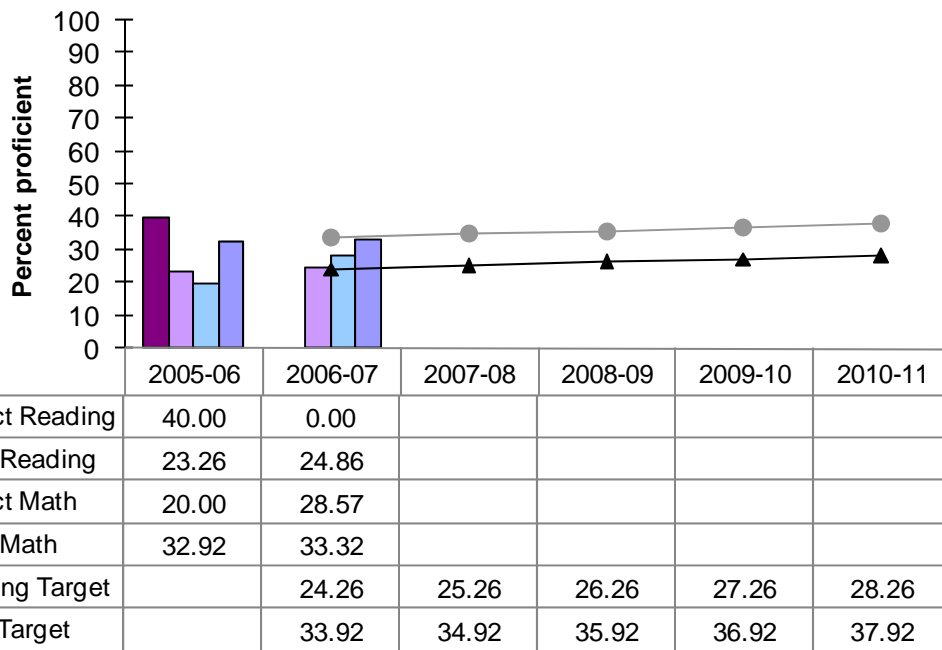
Data source: AYP Database.

Indicator B3C: 5th Grade Proficiency



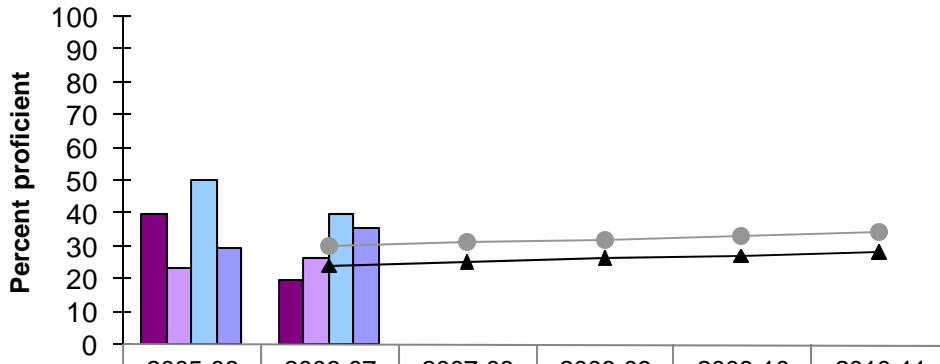
Data source: AYP Database.

Indicator B3C: 6th Grade Proficiency



Data source: AYP Database.

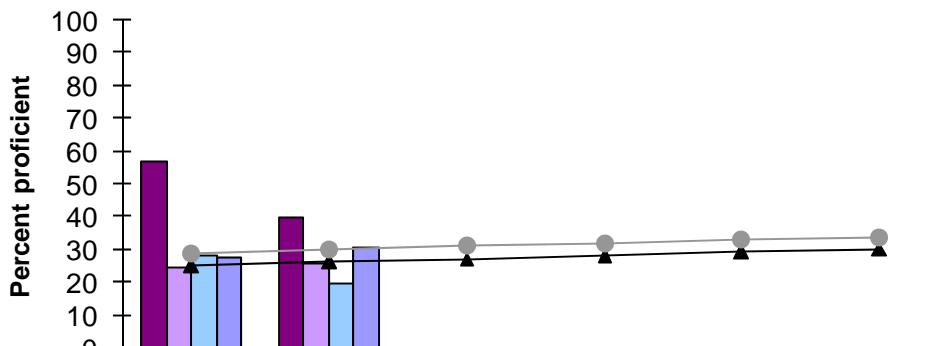
Indicator B3C: 7th Grade Proficiency



■ District Reading	40.00	20.00				
■ State Reading	23.27	26.36				
■ District Math	50.00	40.00				
■ State Math	29.30	35.52				
▲ Reading Target		24.27	25.27	26.27	27.27	28.27
● Math Target		30.30	31.30	32.30	33.30	34.30

Data source: AYP Database.

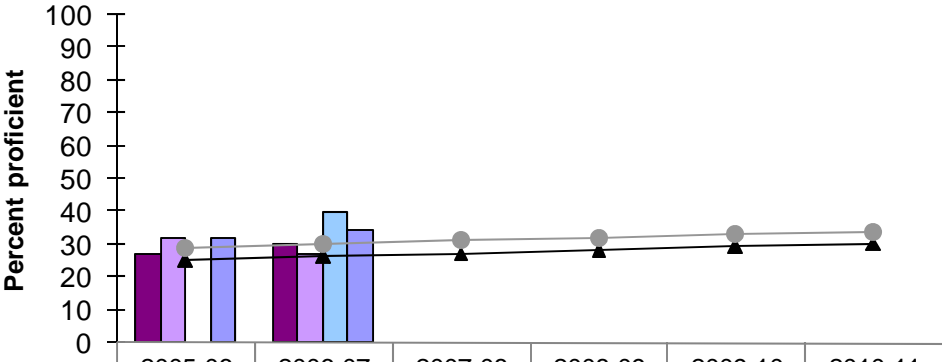
Indicator B3C: 8th Grade Proficiency



■ District Reading	57.14	40.00				
■ State Reading	24.72	25.93				
■ District Math	28.57	20.00				
■ State Math	27.63	30.83				
▲ Reading Target		26.33	27.33	28.33	29.33	30.33
● Math Target		30.14	31.14	32.14	33.14	34.14

Data source: AYP Database.

Indicator B3C: 11th Grade Proficiency

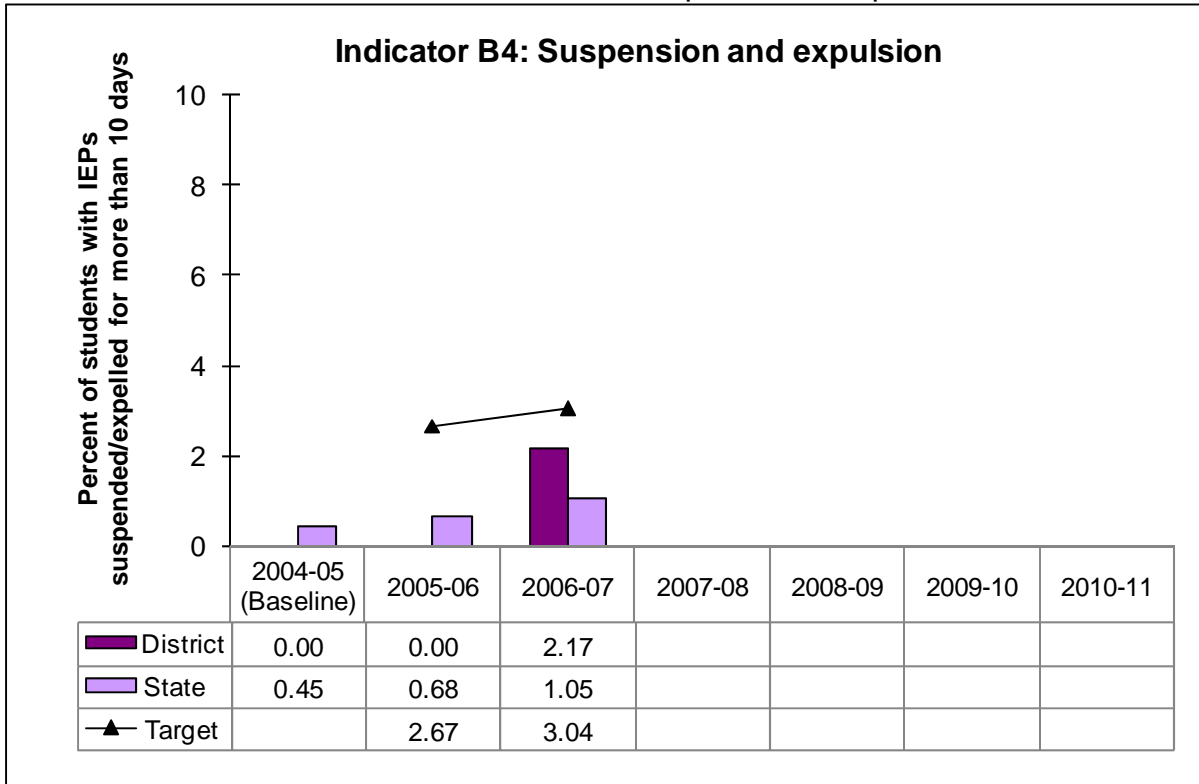


	2005-06	2006-07	2007-08	2008-09	2009-10	2010-11
■ District Reading	27.27	30.00				
■ State Reading	32.17	27.06				
■ District Math	0.00	40.00				
■ State Math	31.71	34.50				
▲ Reading Target	25.33	26.33	27.33	28.33	29.33	30.33
● Math Target	29.14	30.14	31.14	32.14	33.14	34.14

Data source: AYP Database.

Outcome 4: Students with disabilities are being served in appropriate settings

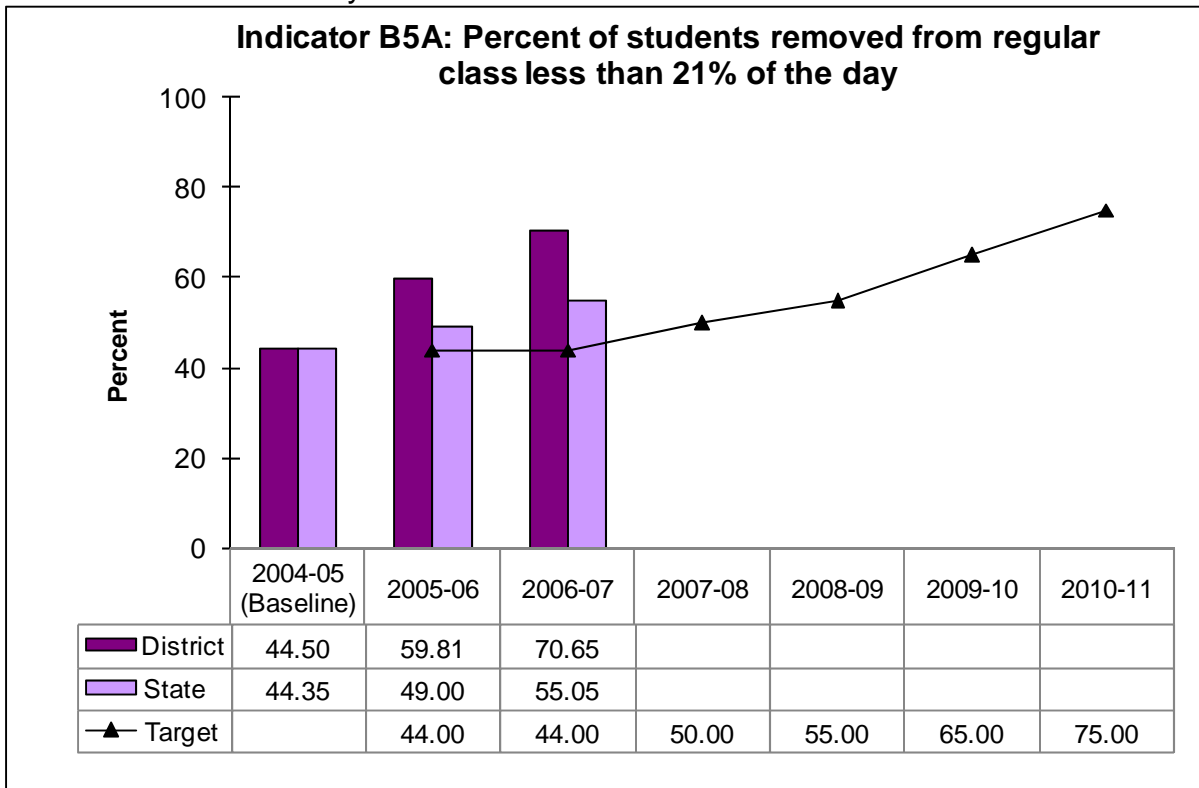
Indicator B4: Percent of students with IEPs suspended or expelled for 10 or more days.



Data source: Project EASIER.

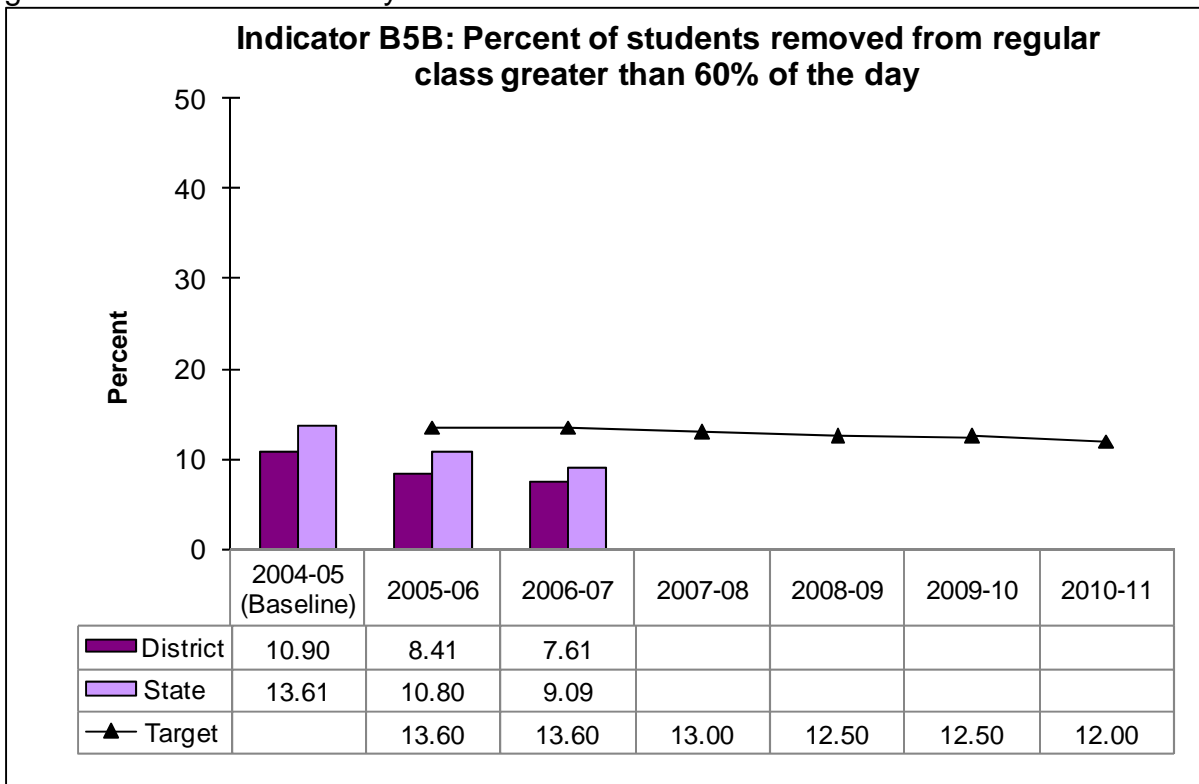
Note: Target range is less than or equal to target value.

Indicator B5A: Percent of children with IEPs aged six through 21 removed from regular class less than 21 % of the day.



Data source: IMS.

Indicator B5B: Percent of children with IEPs aged six through 21 removed from regular class greater than 60% of the day.



Data source: IMS.

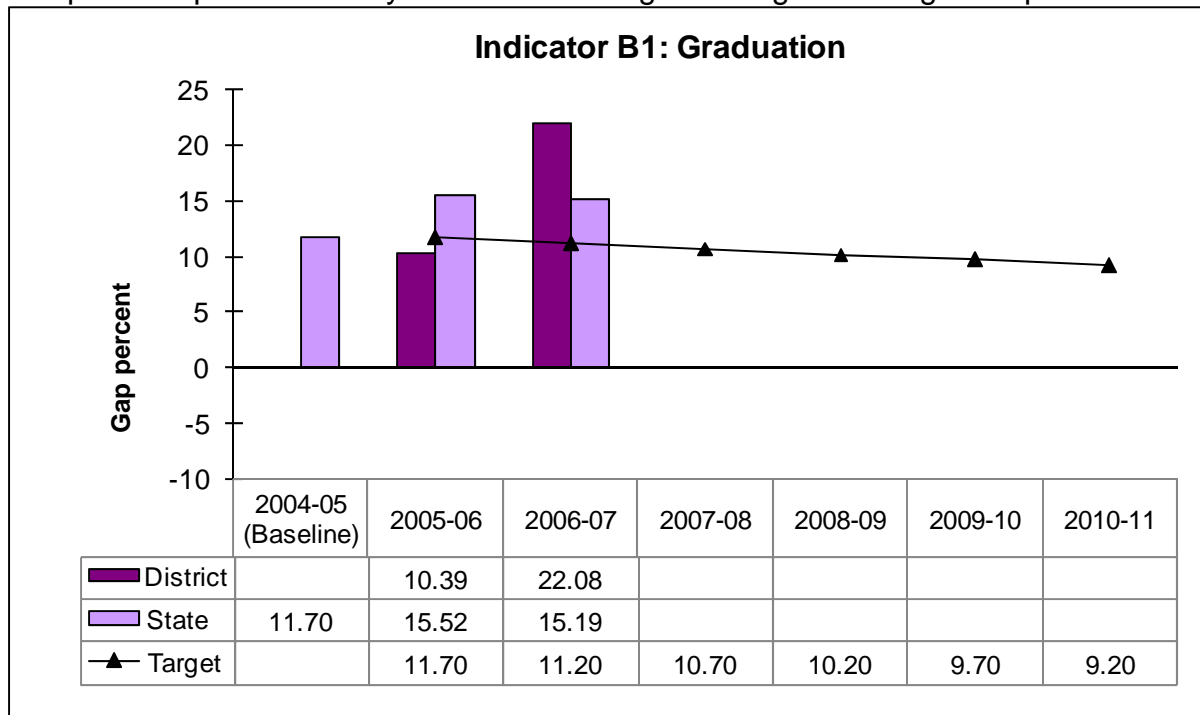
Note: Target range is less than or equal to target value.

Indicator B6: Percent of preschool children with IEPs who received special education and related services in settings with typically developing peers.

For FFY 2006 (2006-2007), OSEP did not require states to report on Indicator B6 due to changes in 618 state-reported data requirements. Indicator B6 will be reported for FFY 2007 (2007-2008).

Outcome 5: Students with disabilities are prepared for success beyond high school

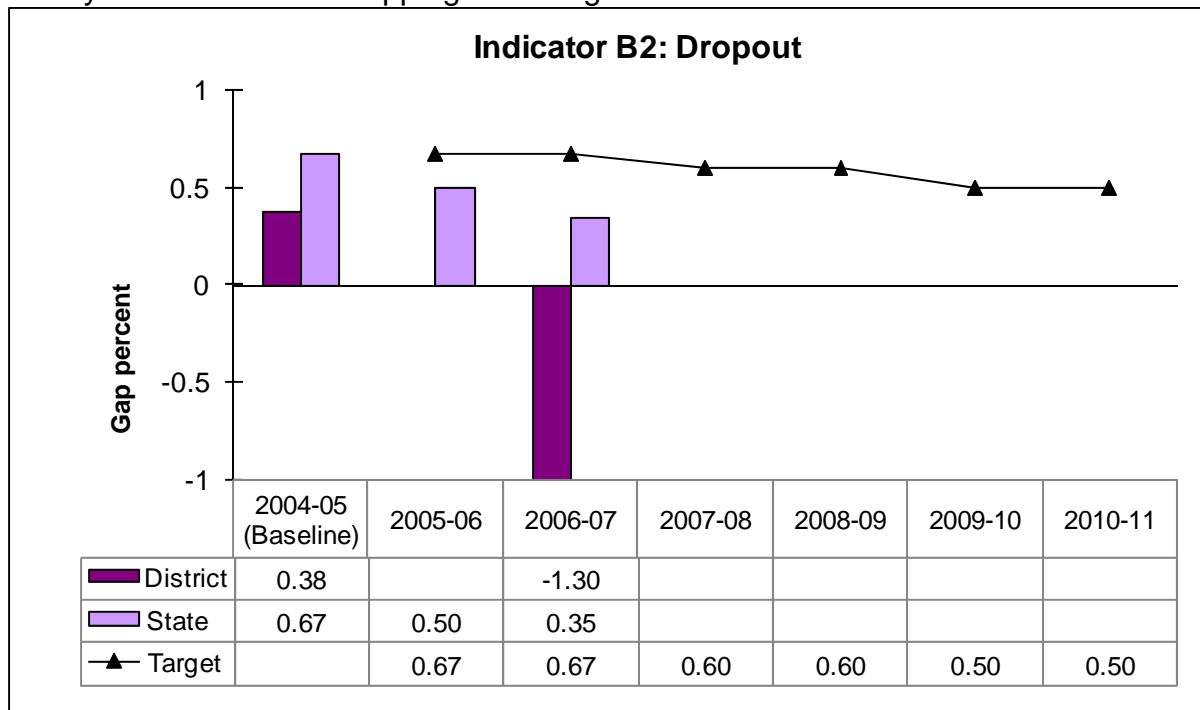
Indicator B1: Percent of youth with IEPs graduating from high school with a regular diploma compared to percent of all youth in the state graduating with a regular diploma.



Data source: Project EASIER.

Note: Target range is less than or equal to target value.

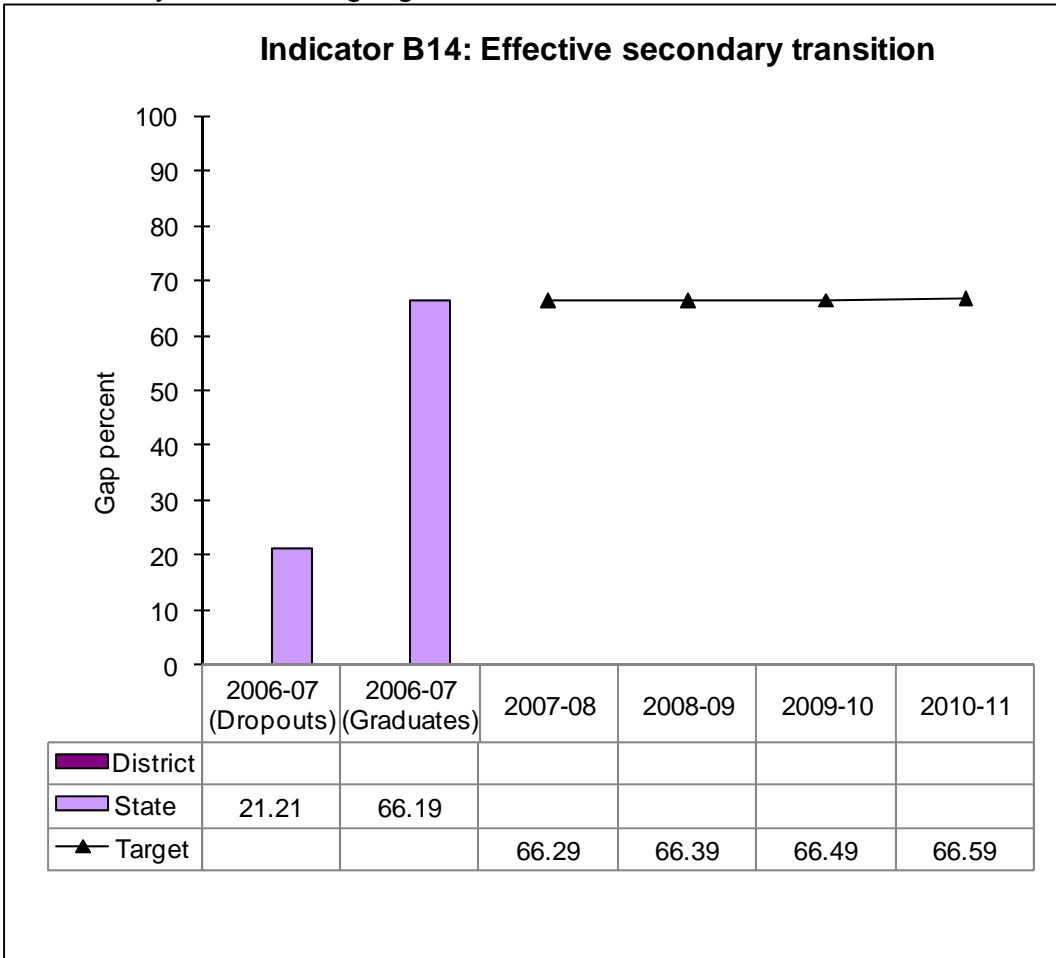
Indicator B2: Percent of youth with IEPs dropping out of high school compared to the percent of all youth in the state dropping out of high school.



Data source: Project EASIER.

Note: Target range is less than or equal to target value.

Indicator B14: Percent of youth who had IEPs, are no longer in secondary school and who have been competitively employed, enrolled in some type of postsecondary school, or both, within one year of leaving high school.

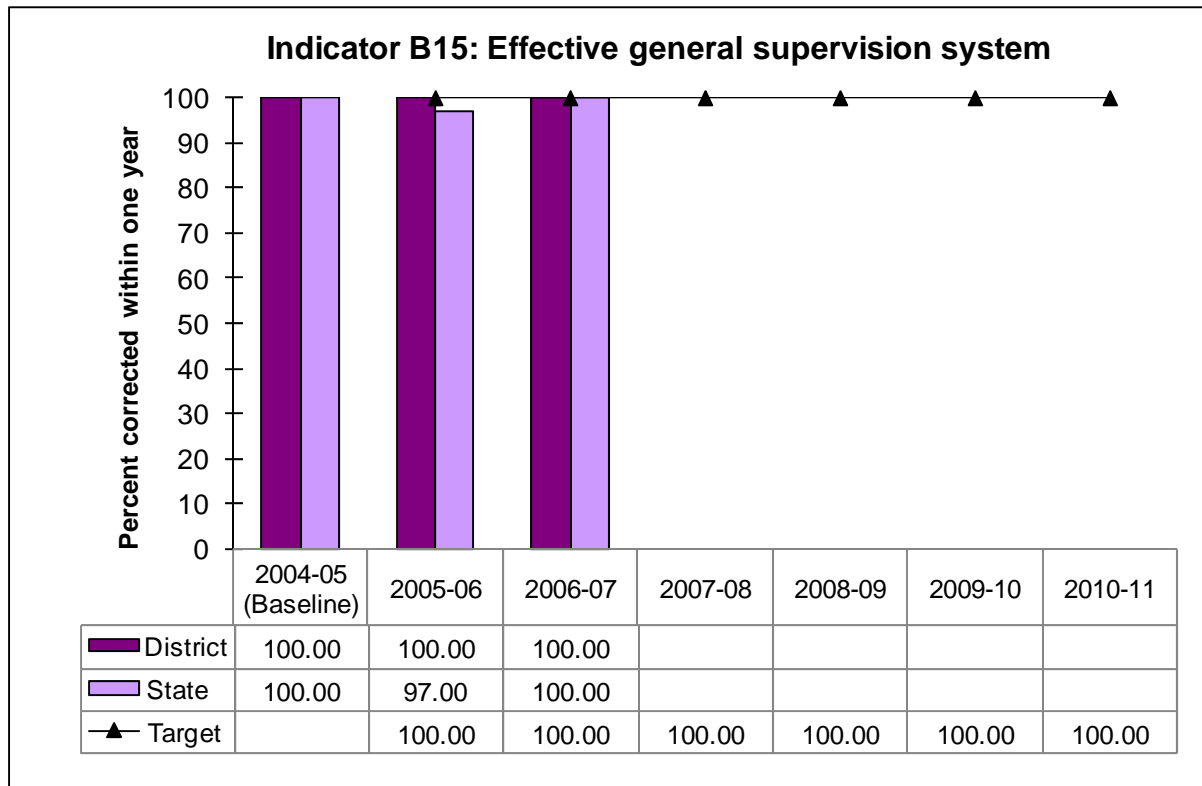


Data source: Iowa Department of Education Survey.

Note: For FFY 2006 (2006-2007) results for graduates and dropouts are reported separately. These results will be combined in one survey in future years.

District Compliance

Indicator B15: Percent of procedural noncompliance corrected within one year of identification.



Data source: ISTAR.

Indicator B20: Data are timely and accurate.

State data for FFY 2006 (2006-2007) were submitted accurately and on time. Analysis of year-to-year changes at the AEA and district levels will be conducted and results will be reported in June 2008.