

Eddyville-Blakesburg District Profile
Iowa FFY 2007 (2007-2008)
Individuals with Disabilities Education Act (IDEA) Part B

Outcome 1: Students with disabilities enter school ready to learn at high levels

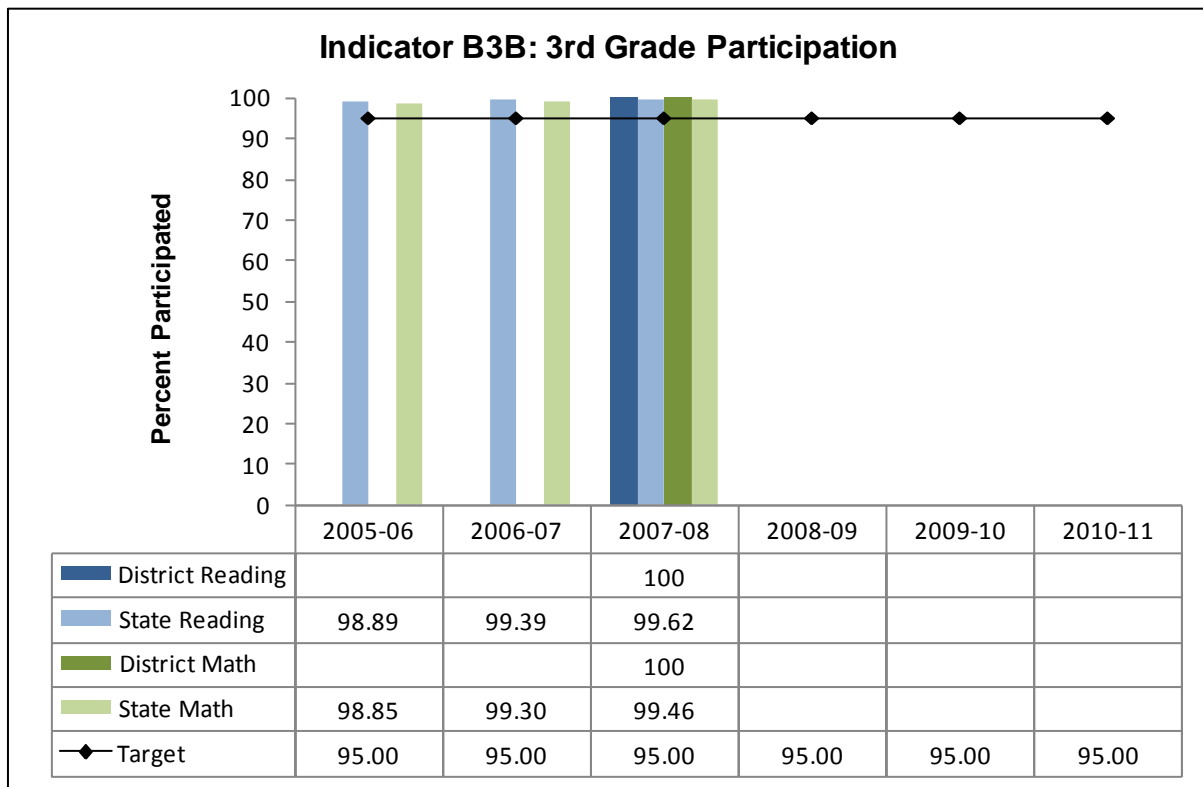
Indicator B7: Data on Early Childhood Outcomes are not reported for FFY 2007 (2007-2008) because of insufficient n size. Data will be reported and targets will be set for FFY 2008 (2008-2009).

Outcome 2: Students with disabilities participate in district wide assessments

Note: Missing data or “NA” in the tables and charts below indicate that the measure is not applicable for the district for the year indicated or that data were suppressed because n sizes were insufficient for public reporting.

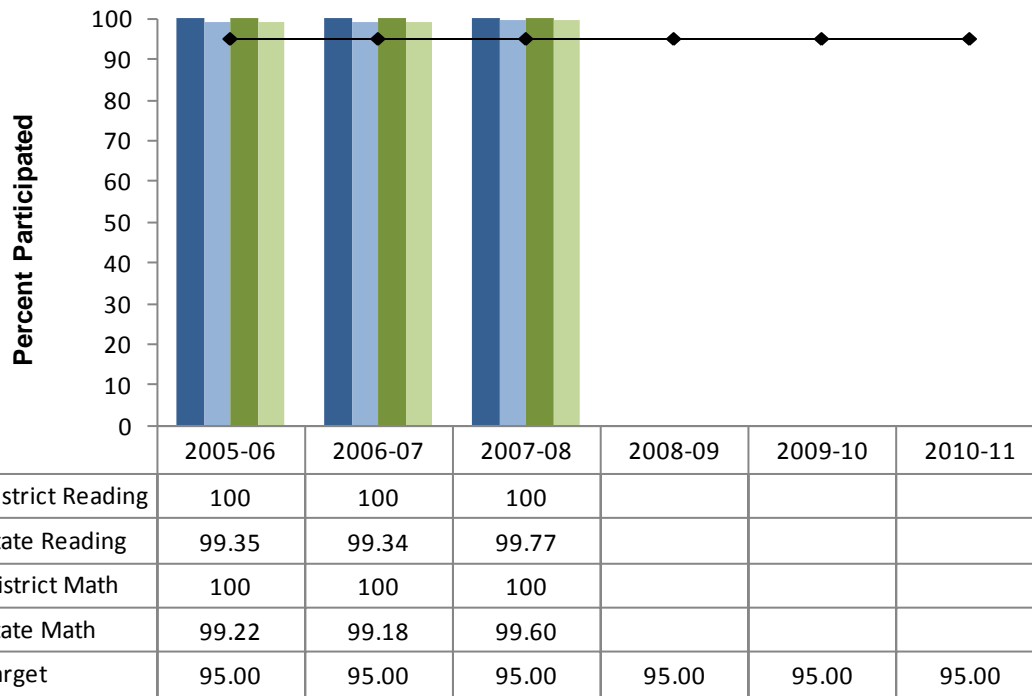
Indicator B3: Participation and performance of children with disabilities on statewide assessments.

Indicator B3B: Participation rate for children with IEPs in a regular assessment with no accommodations, regular assessment with accommodations, alternate assessment against grade level standards or alternate assessment against alternate achievement standards.



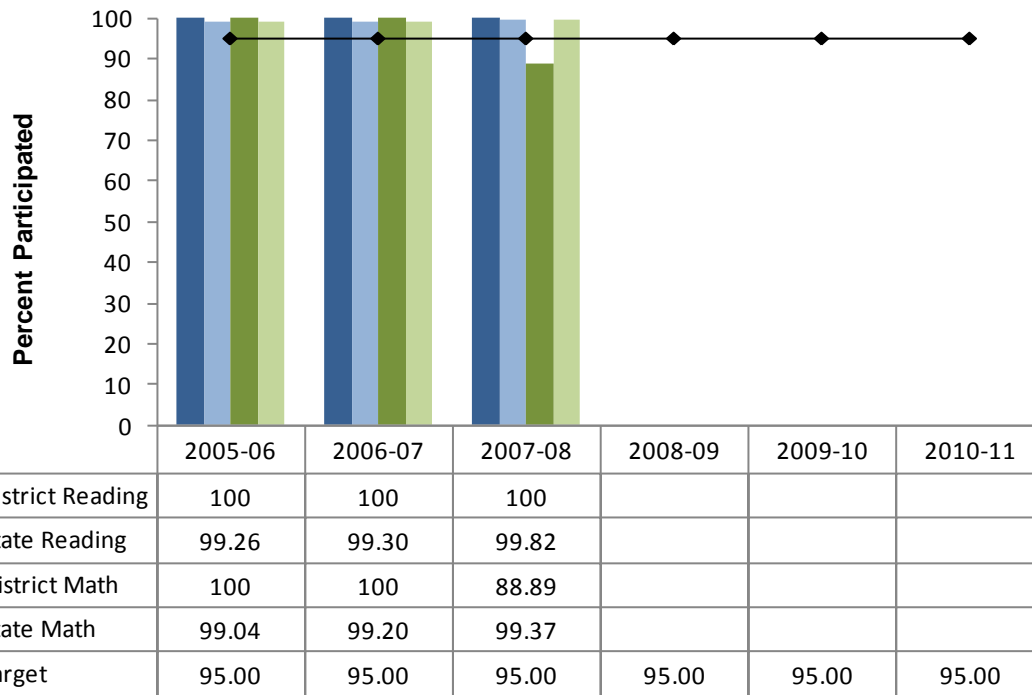
Data source: AYP Database.

Indicator B3B: 4th Grade Participation



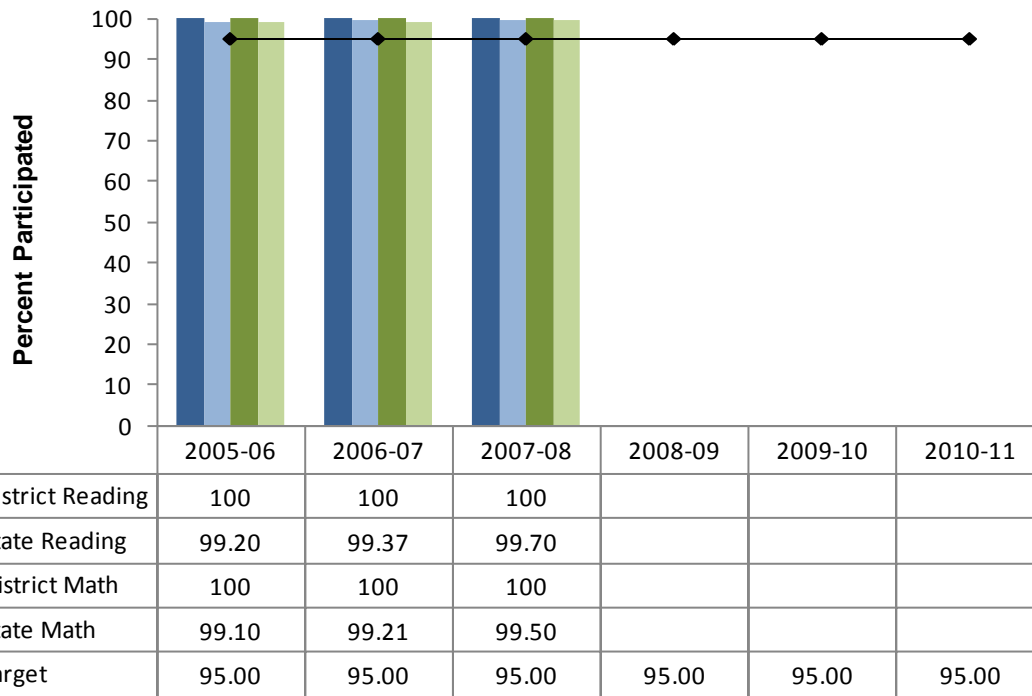
Data source: AYP Database.

Indicator B3B: 5th Grade Participation



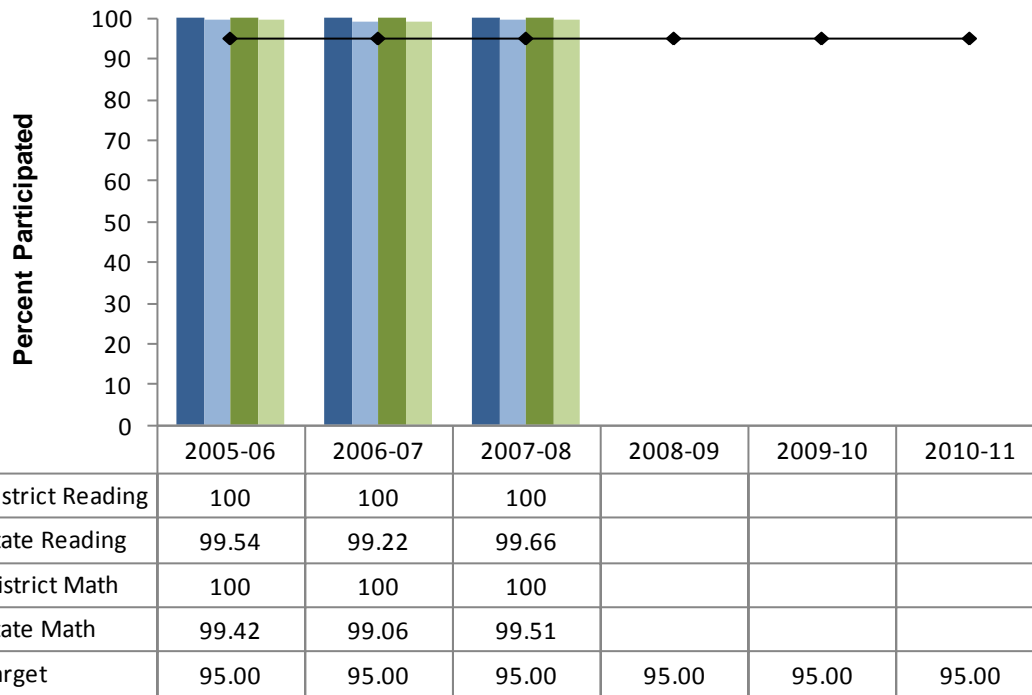
Data source: AYP Database.

Indicator B3B: 6th Grade Participation



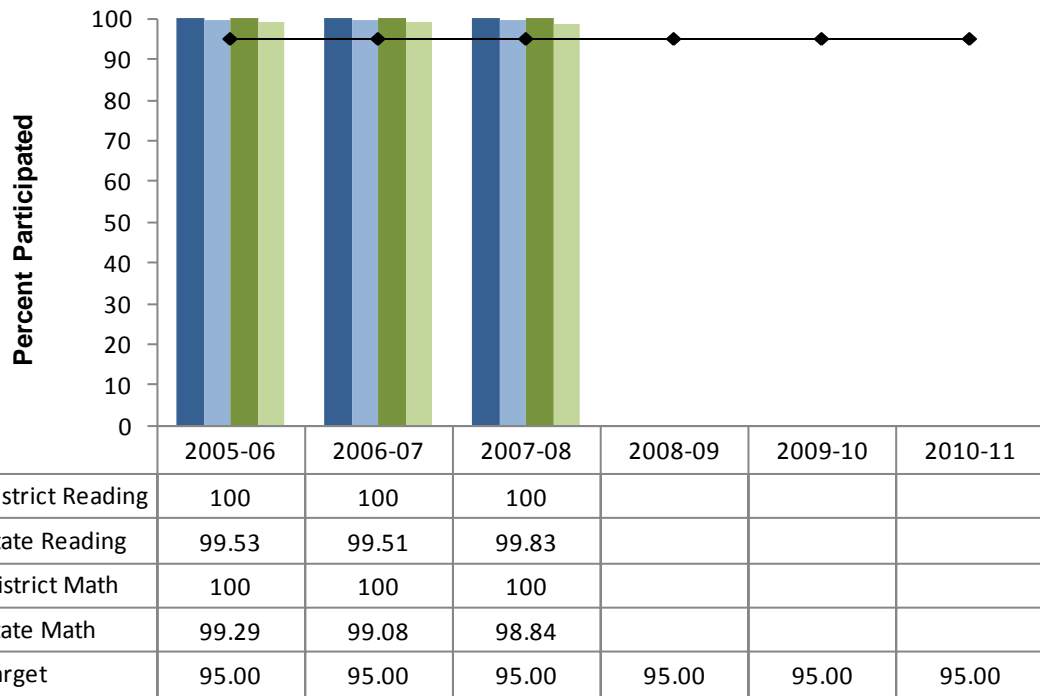
Data source: AYP Database.

Indicator B3B: 7th Grade Participation



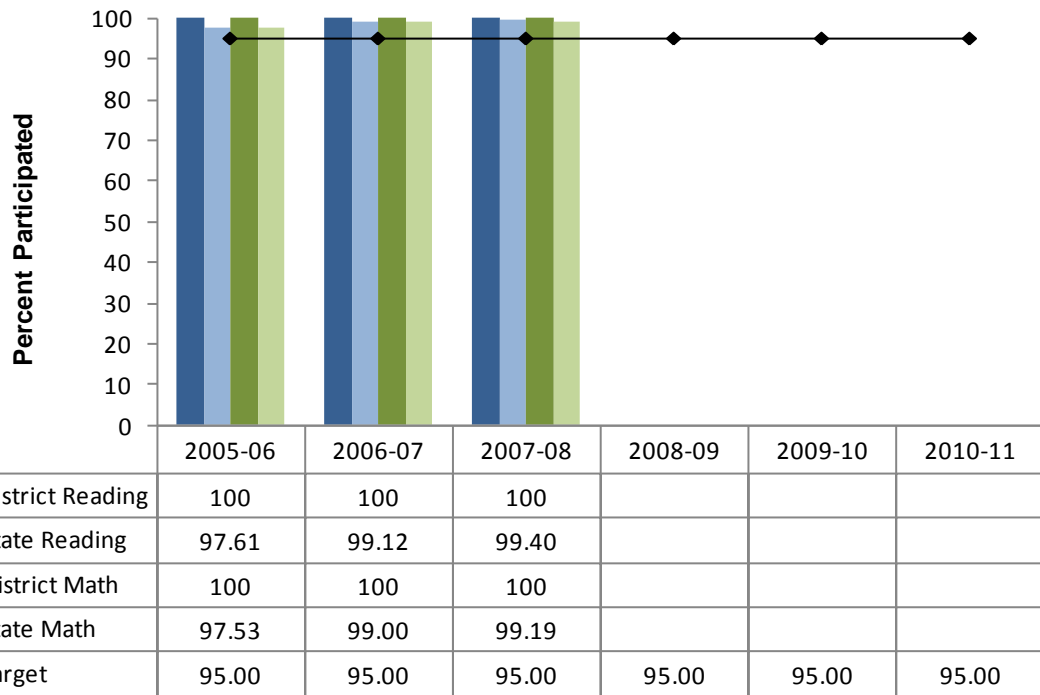
Data source: AYP Database.

Indicator B3B: 8th Grade Participation



Data source: AYP Database.

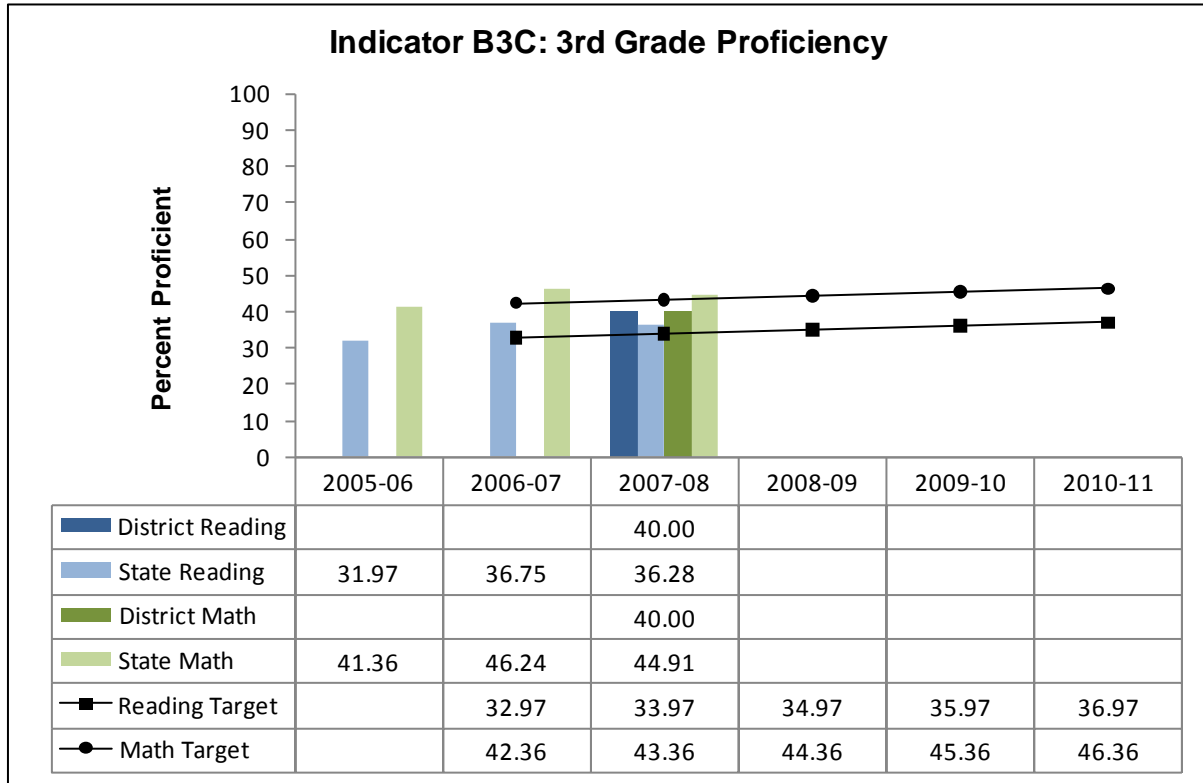
Indicator B3B: 11th Grade Participation



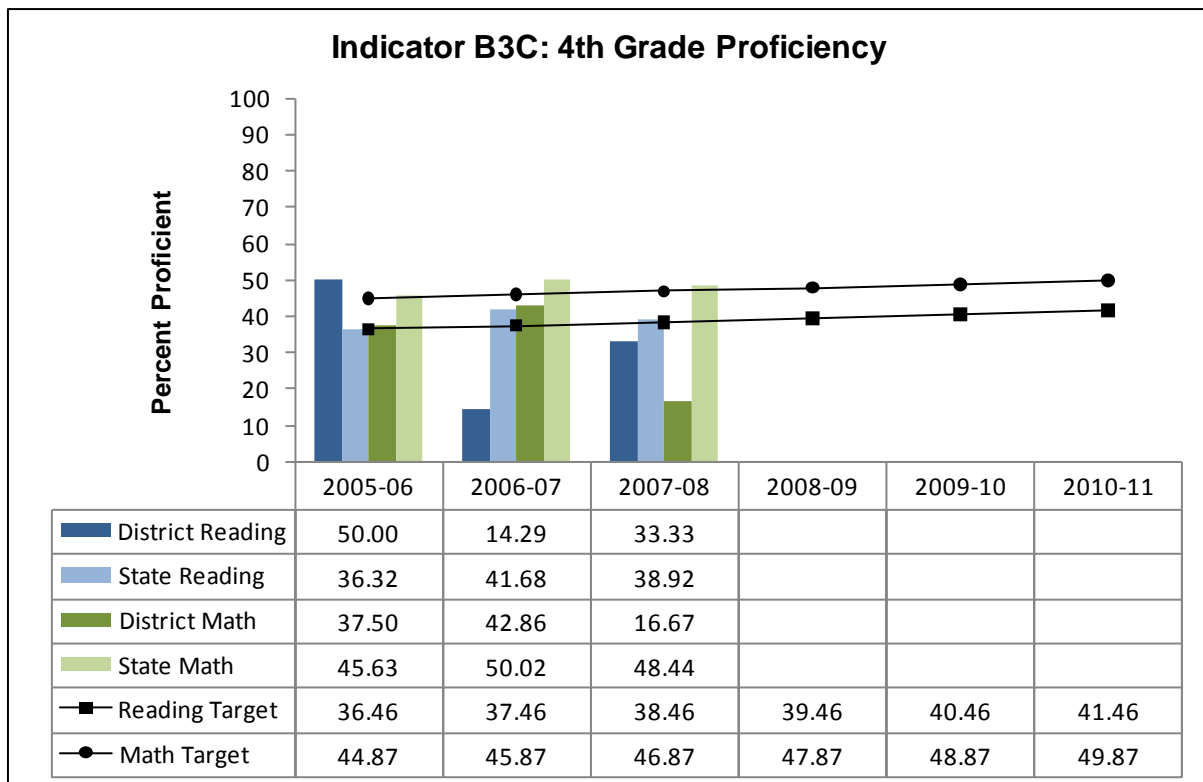
Data source: AYP Database.

Outcome 3: Students with disabilities meet proficiency on district wide assessments

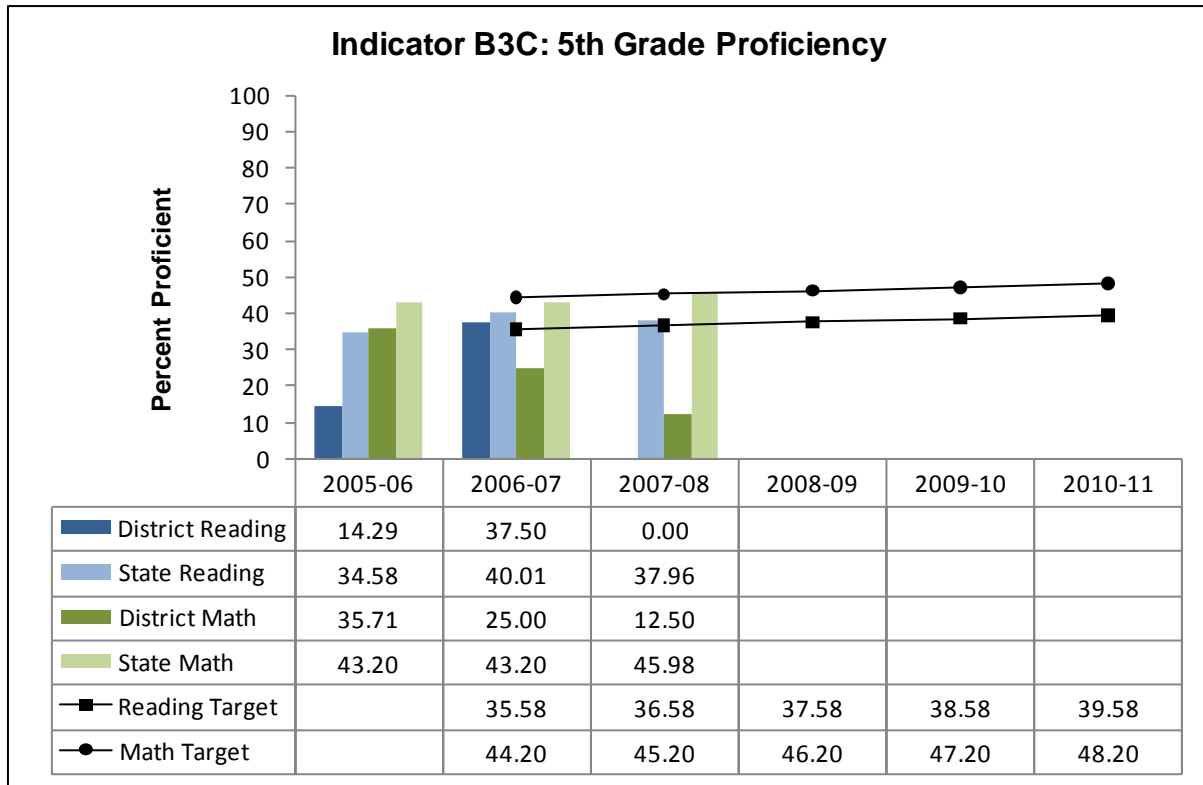
Indicator B3C: Proficiency rate for children with IEPs against grade level standards and alternate achievement standards.



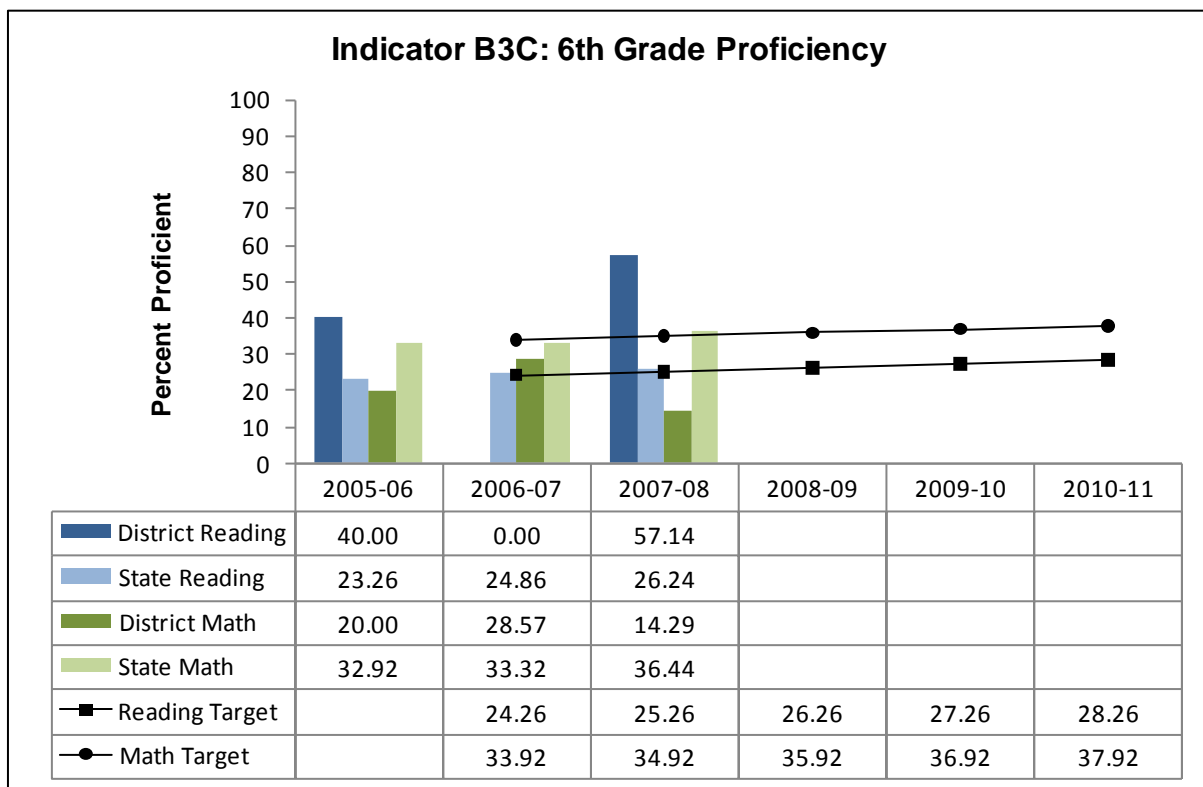
Data source: AYP Database.



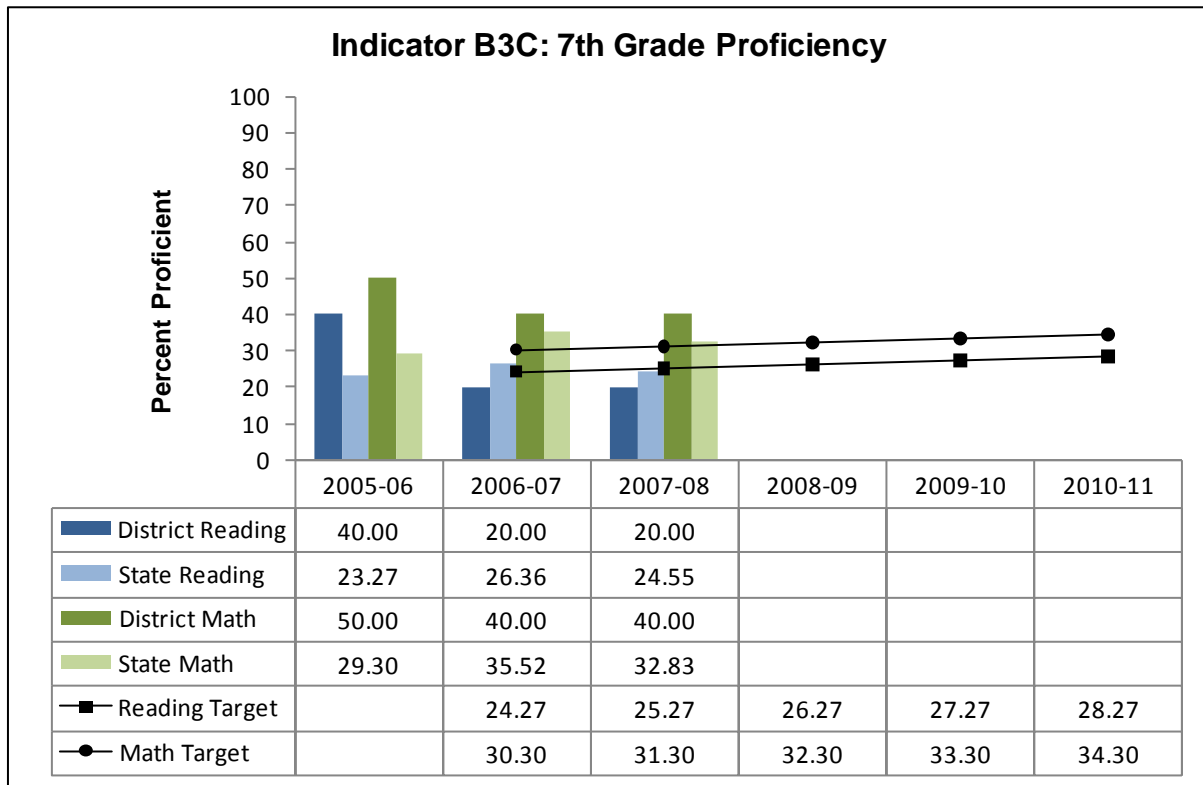
Data source: AYP Database.



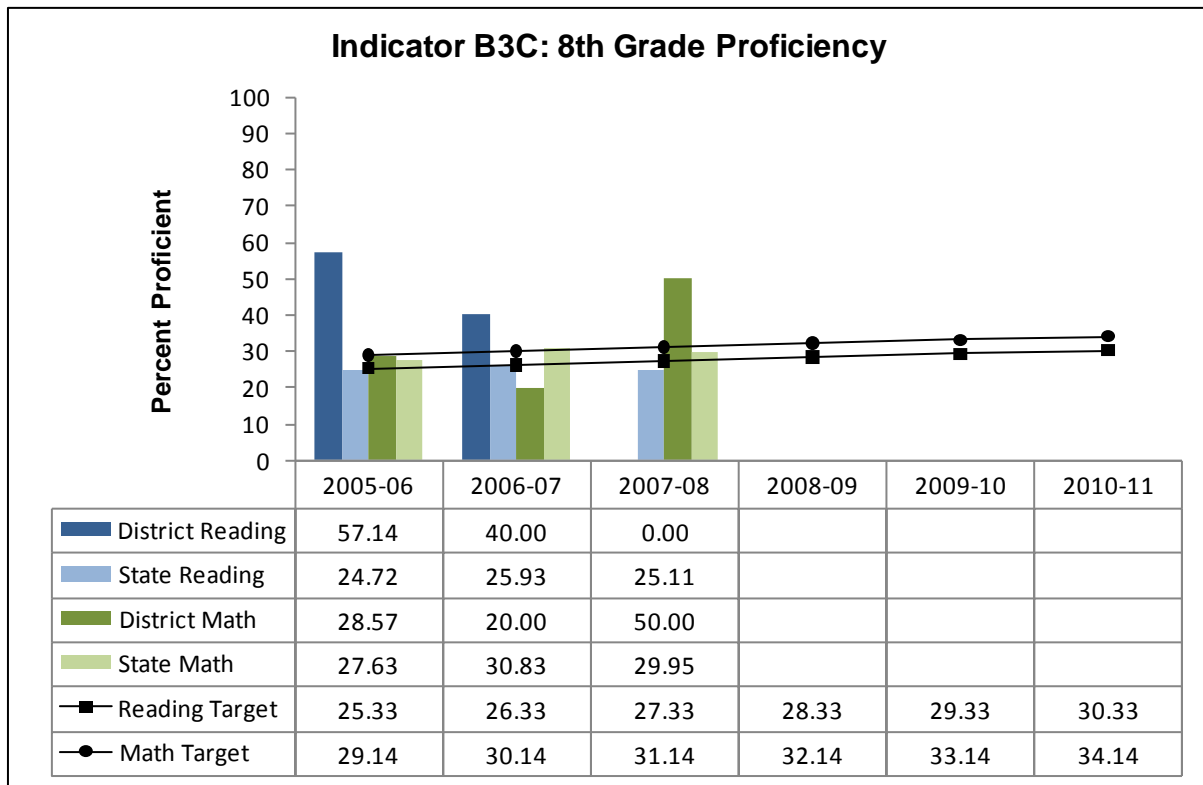
Data source: AYP Database.



Data source: AYP Database.

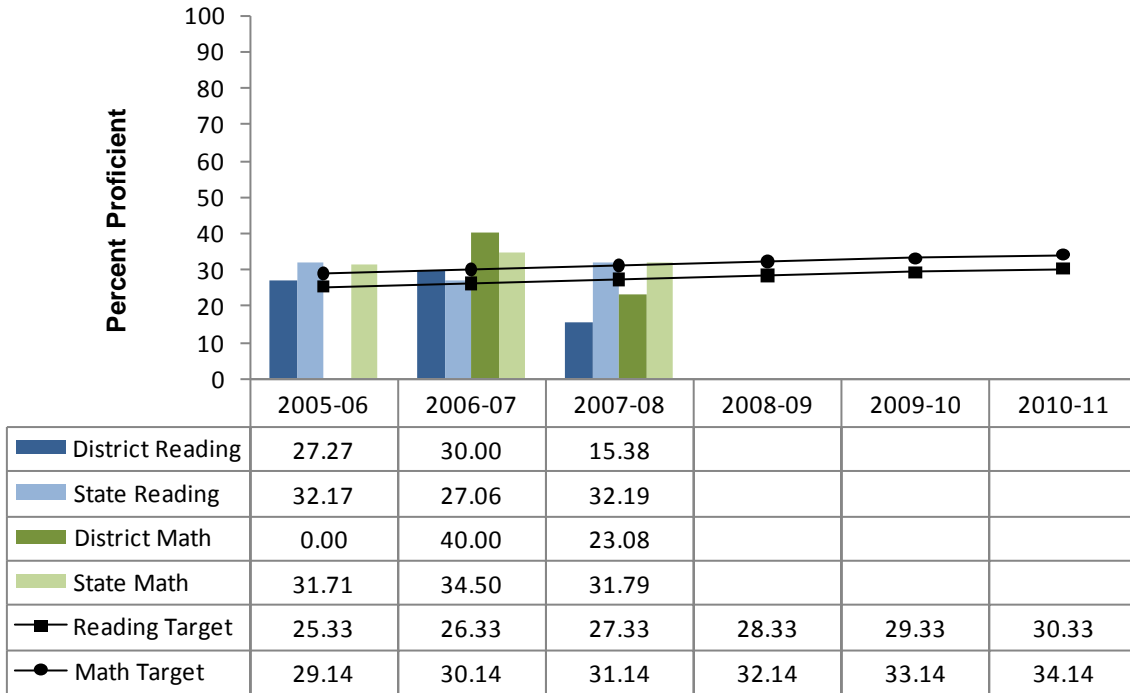


Data source: AYP Database.



Data source: AYP Database.

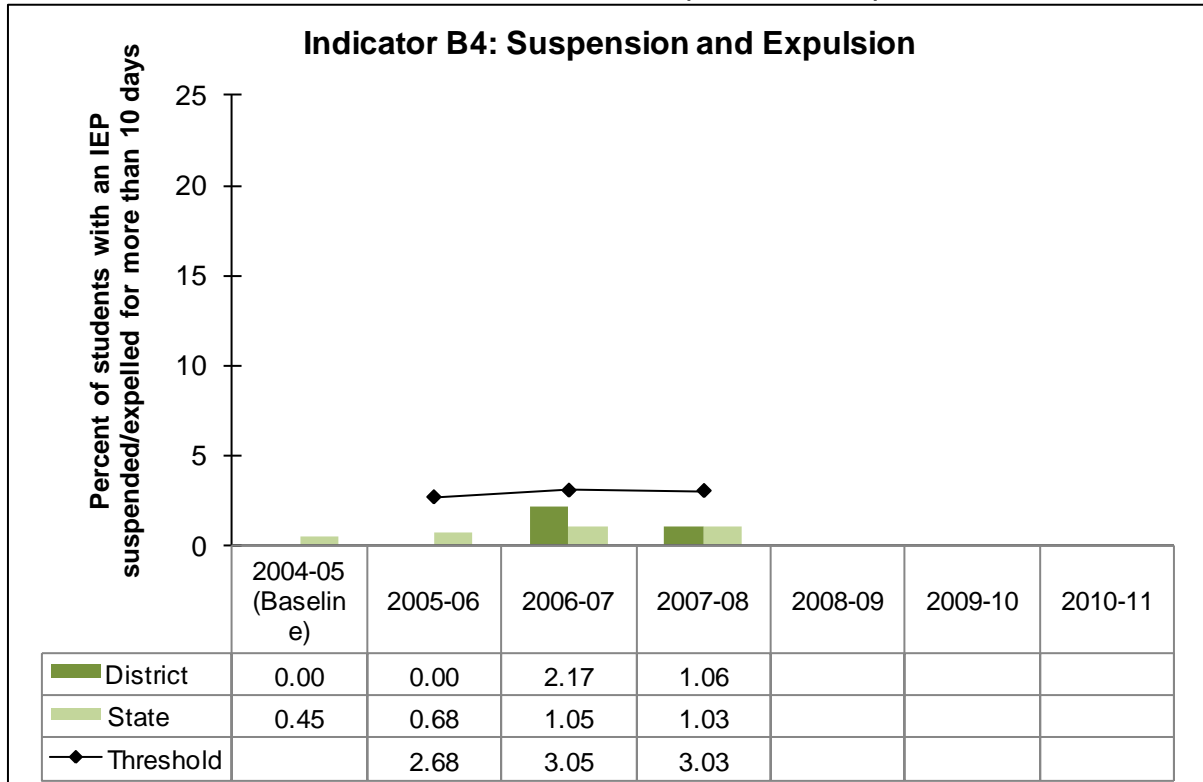
Indicator B3C: 11th Grade Proficiency



Data source: AYP Database..

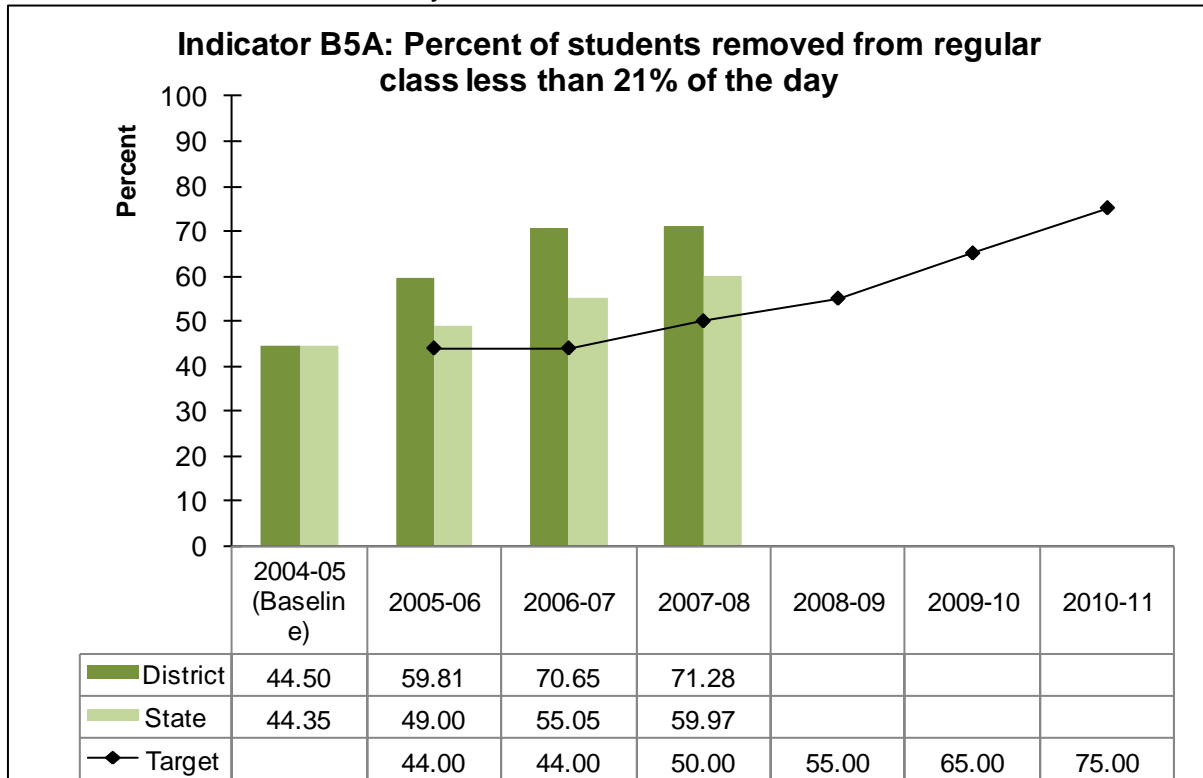
Outcome 4: Students with disabilities are being served in appropriate settings

Indicator B4: Percent of students with IEPs suspended or expelled for more than 10 days.



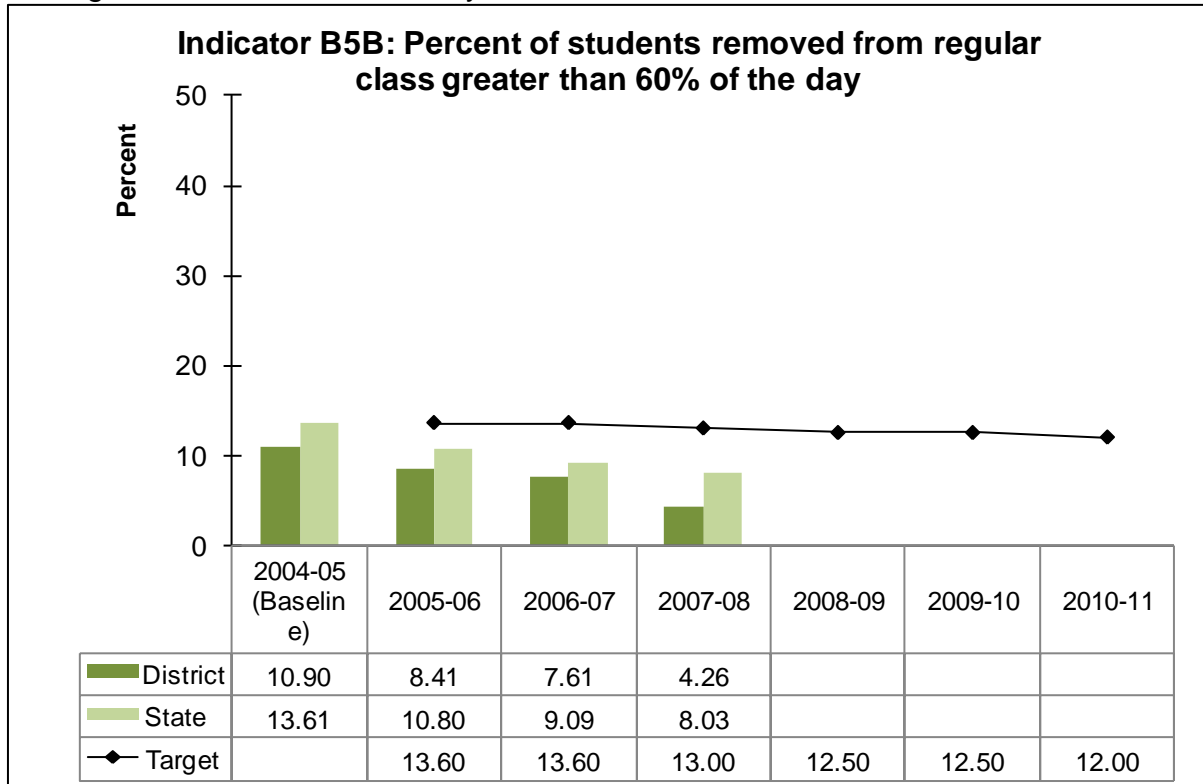
Data source: Project EASIER. Note: Target range is less than threshold for significant discrepancy.

Indicator B5A: Percent of children with IEPs aged six through 21 removed from regular class less than 21 % of the day.



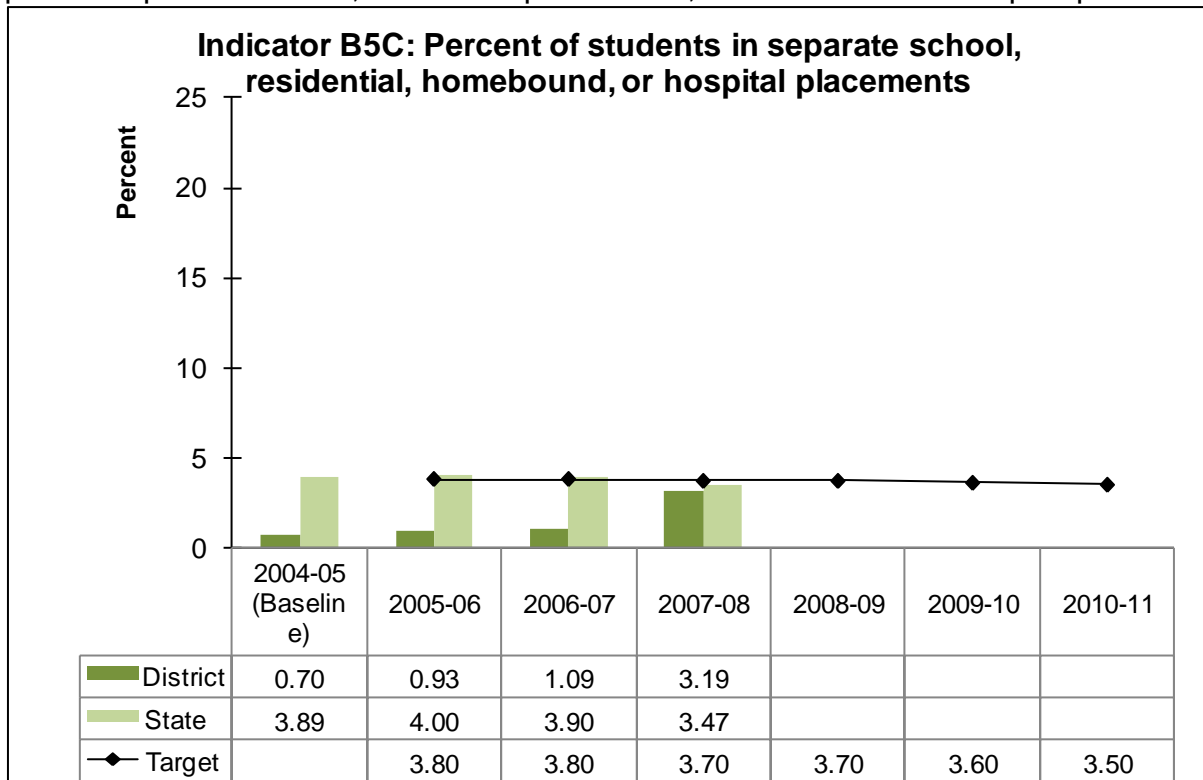
Data source: IMS.

Indicator B5B: Percent of children with IEPs aged six through 21 removed from regular class greater than 60% of the day.



Data source: IMS. Note: Target range is less than or equal to target value.

Indicator B5C: Percent of children with IEPs aged six through 21 served in public or private separate schools, residential placements, or homebound or hospital placements.



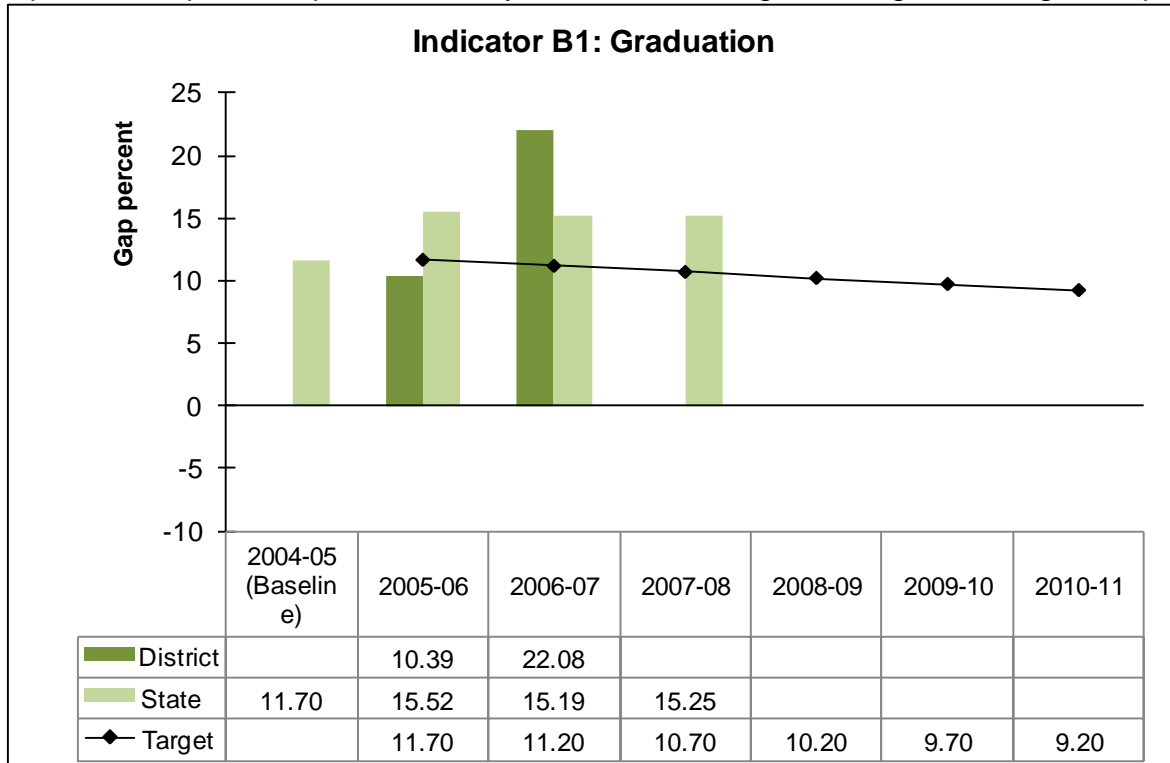
Data source: IMS. Note: Target range is less than or equal to target value.

Indicator B6: Percent of preschool children with IEPs who received special education and related services in settings with typically developing peers.

New baseline and targets for Indicator B6 will be reported for FFY 2008 (2008-2009).

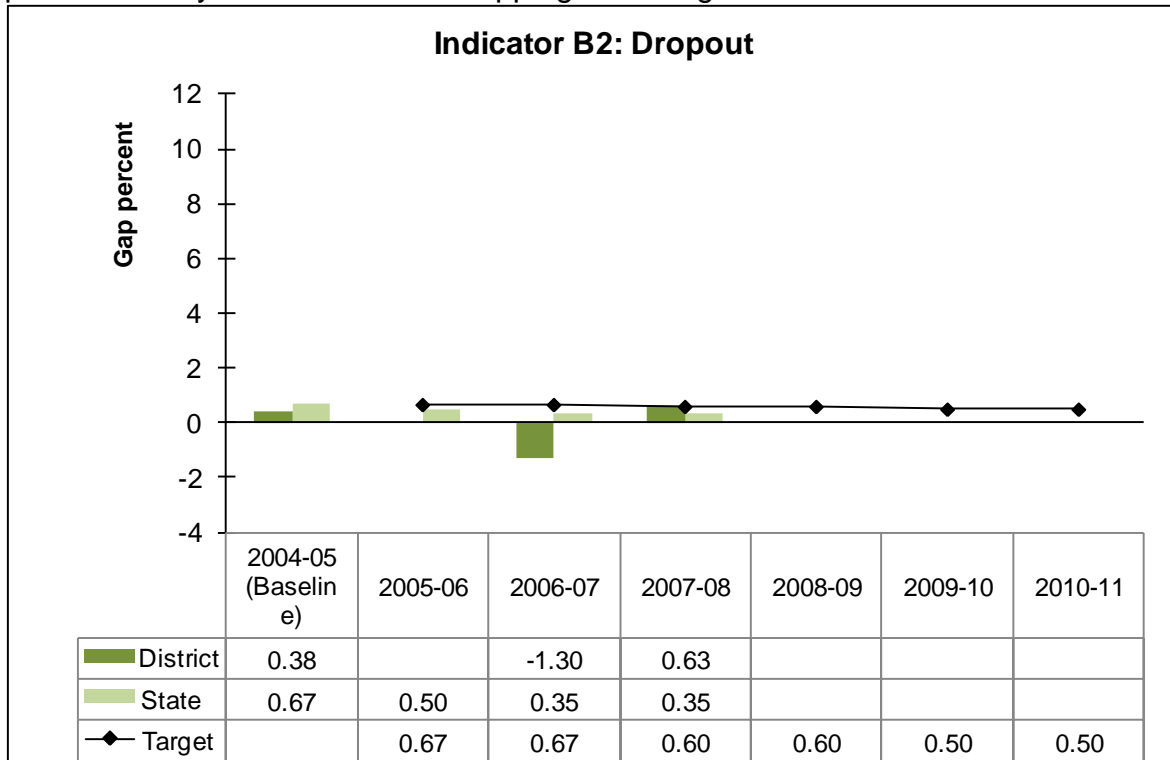
Outcome 5: Students with disabilities are prepared for success beyond high school

Indicator B1: Percent of youth with IEPs graduating from high school with a regular diploma compared to percent of all youth in the state graduating with a regular diploma.



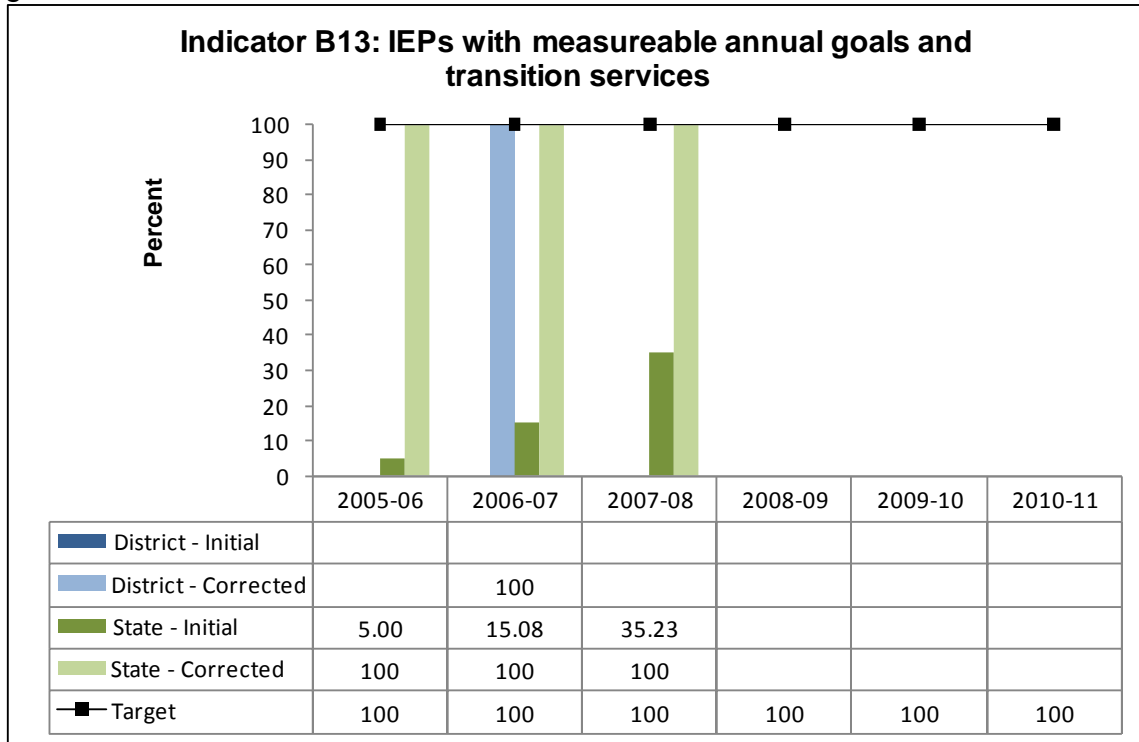
Data source: Project EASIER. Note: Target range is less than or equal to target value.

Indicator B2: Percent of youth with IEPs dropping out of high school compared to the percent of all youth in the state dropping out of high school.



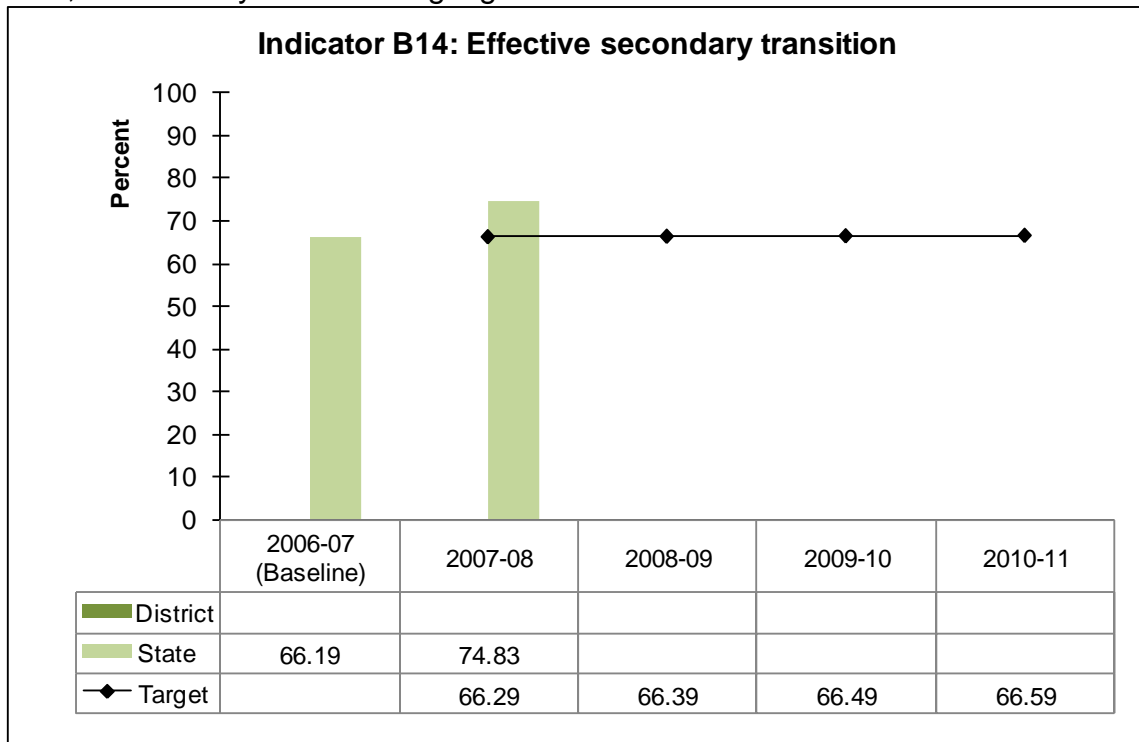
Data source: Project EASIER. Note: Target range is less than or equal to target value.

Indicator B13: Percent of youth age 16 and above with IEP with measureable, annual IEP goals and transition services.



Data source: ISTAR. Note: Missing district data in the above chart for any year indicate that the district did not participate in the file review for that year.

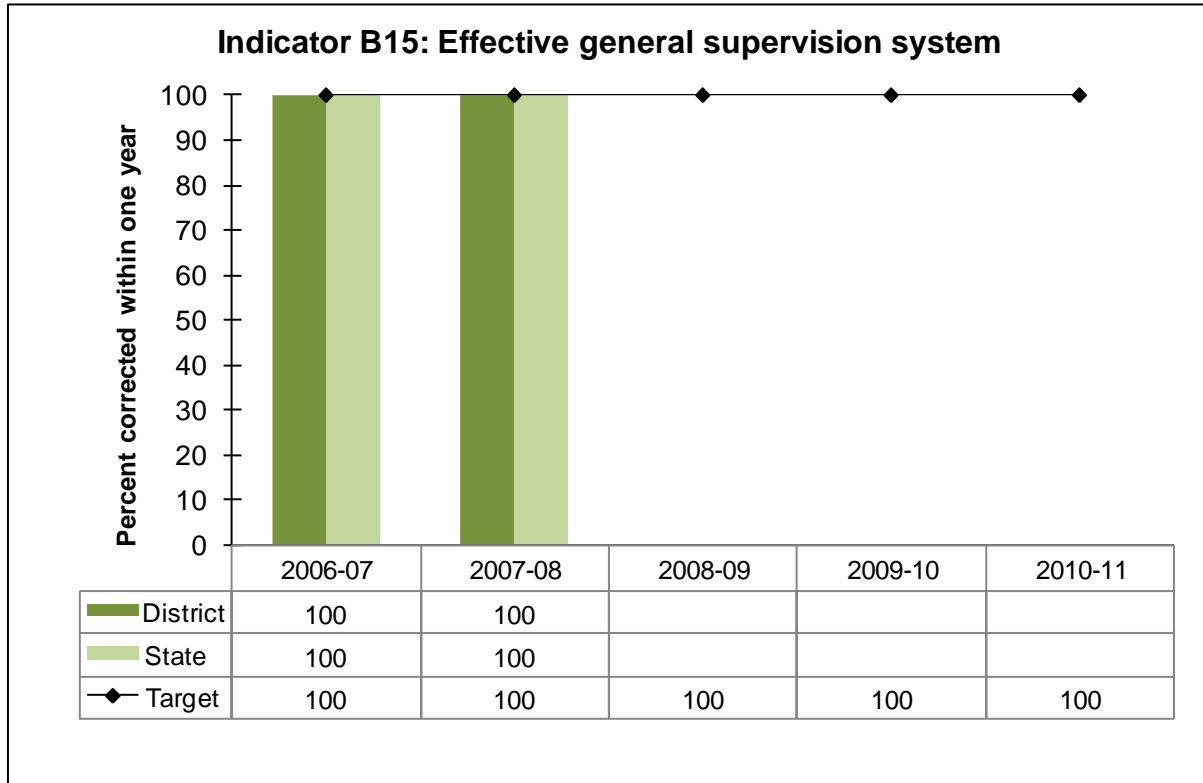
Indicator B14: Percent of youth who had IEPs, are no longer in secondary school and who have been competitively employed, enrolled in some type of postsecondary school, or both, within one year of leaving high school.



Data source: Iowa Department of Education Survey. Note: Missing district data in the above chart for any year indicate that the district did not participate in the Indicator B14 survey for that year.

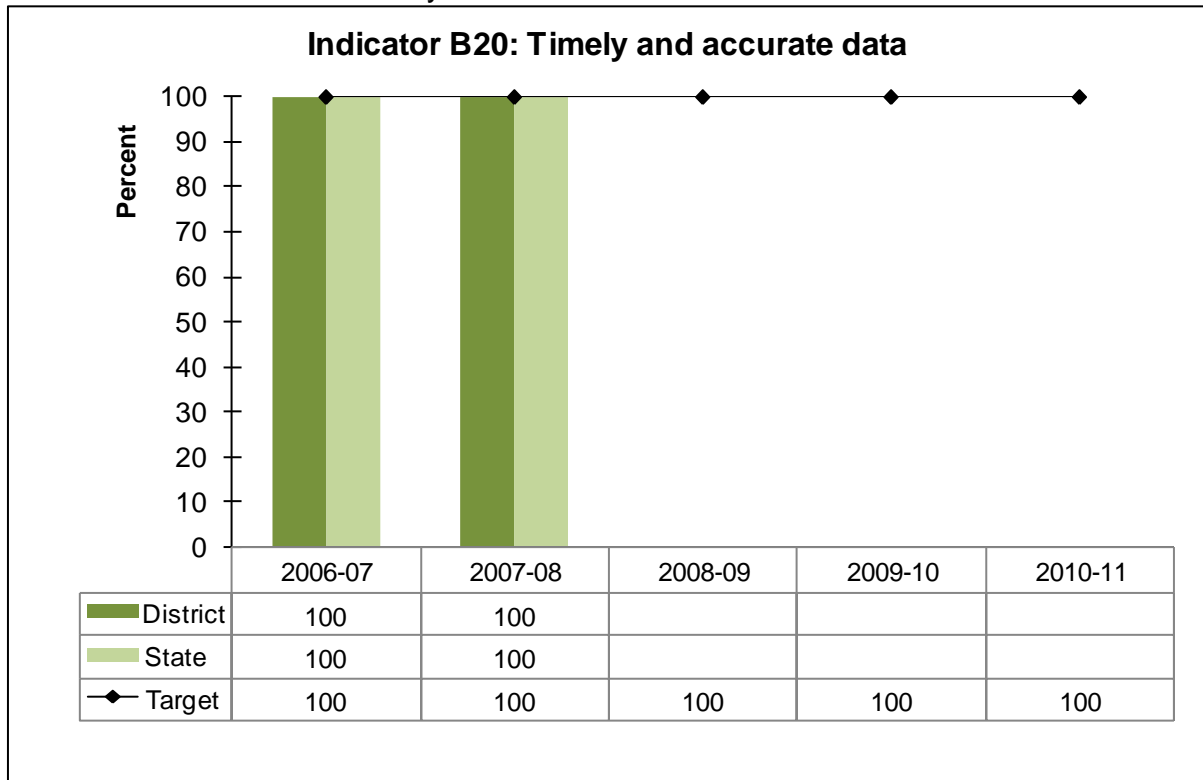
District Compliance

Indicator B15: Percent of procedural noncompliance corrected within one year of identification.



Data source: ISTAR.

Indicator B20: Data are timely and accurate.



Data source: IMS, ISTAR, Project EASIER.